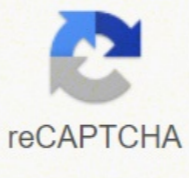


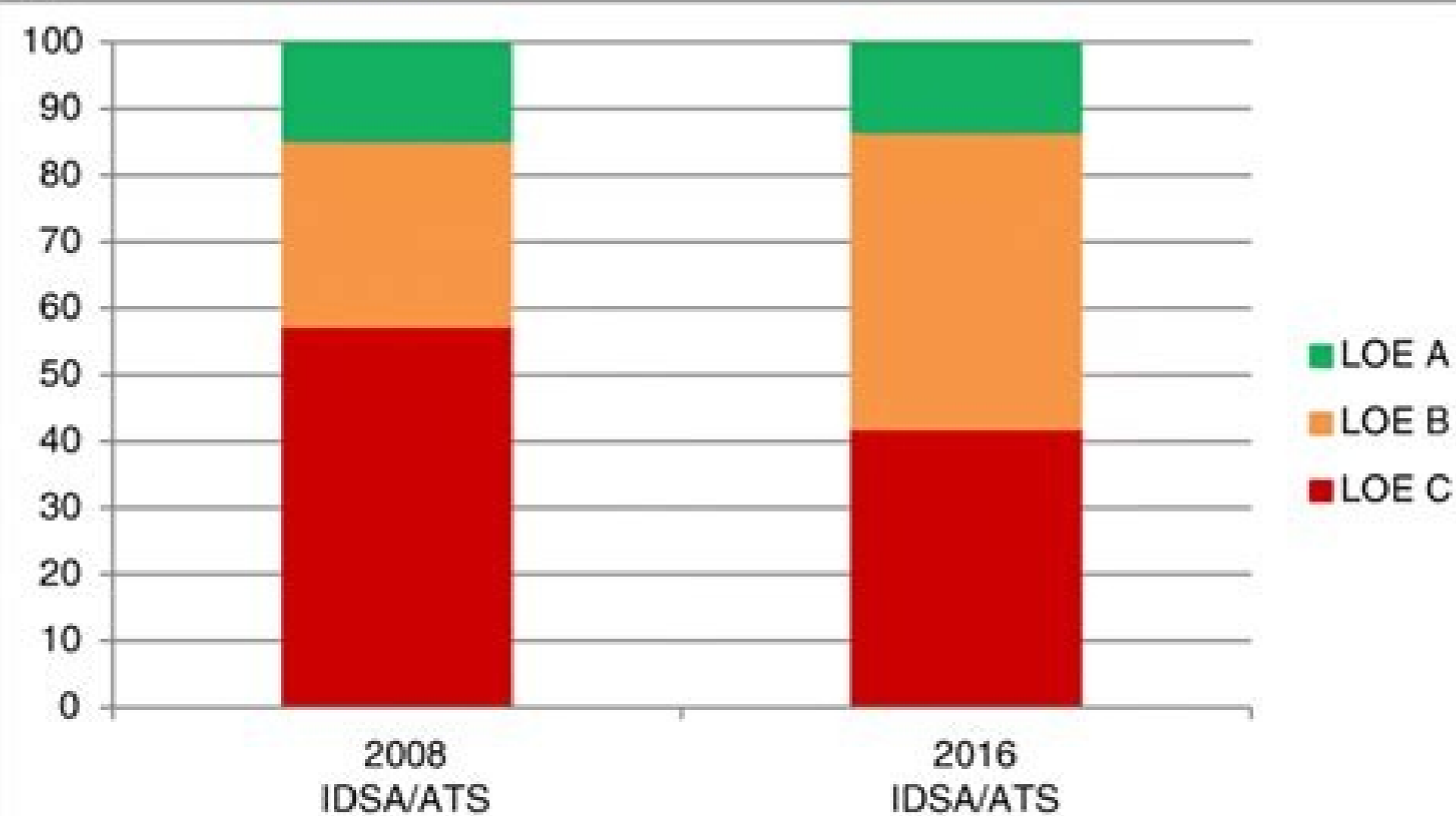


I'm not robot

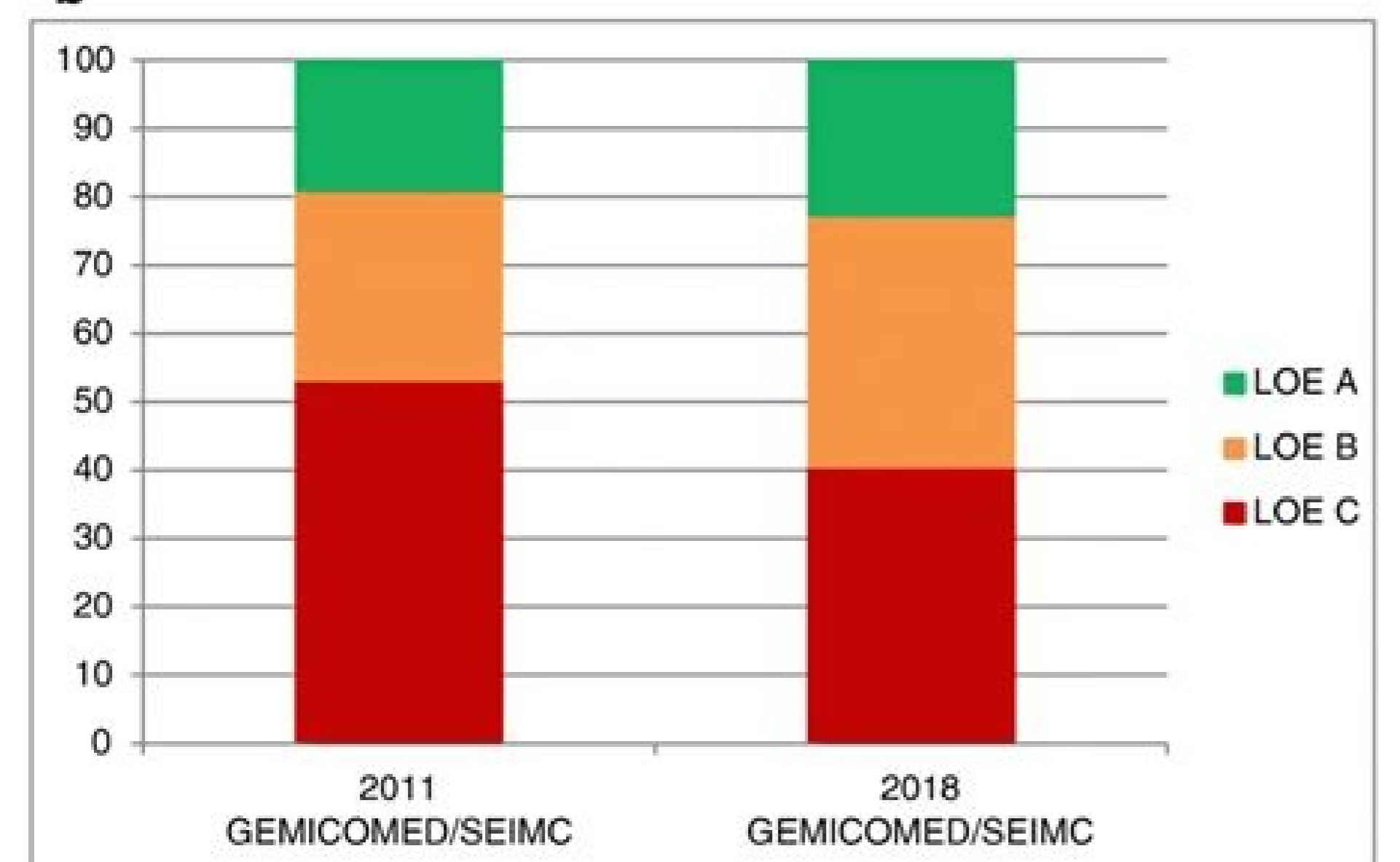


Open

**a**



**b**



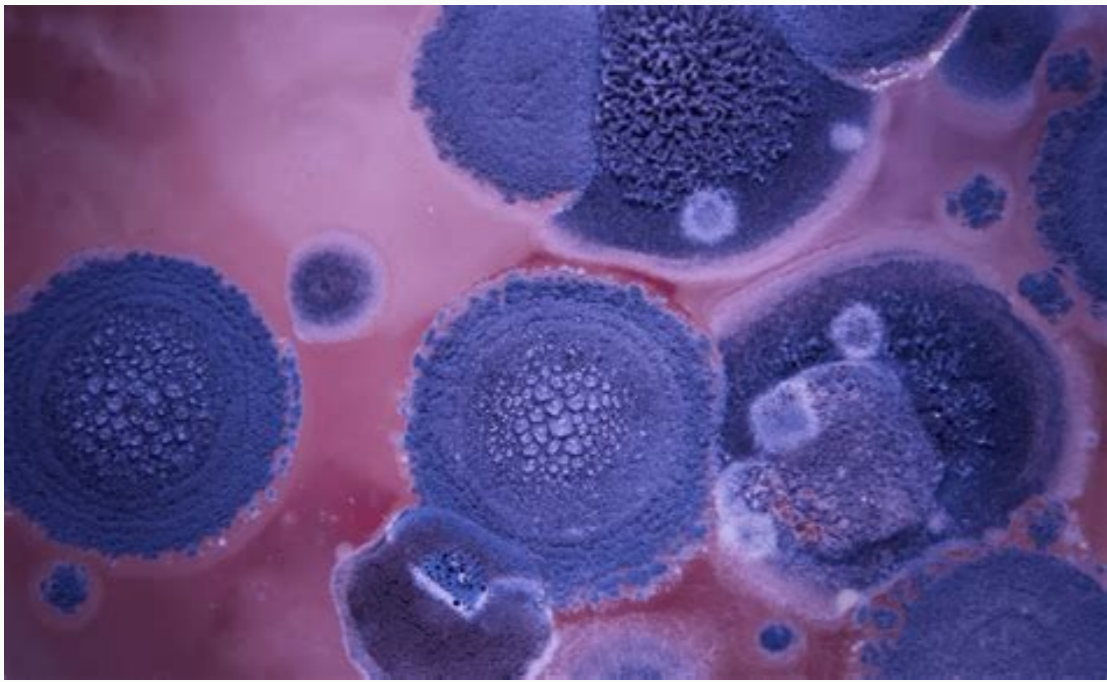
Aspergillosis of the CNS	Similar to invasive pulmonary aspergillosis	Similar to invasive pulmonary aspergillosis	ally administered agent This infection is associated with the highest mortality among all of the different patterns of invasive aspergillosis; drug interactions with anticonvulsant therapy
Aspergillus infections of the heart (endocarditis, pericarditis, and myocarditis)	...	Similar to invasive pulmonary aspergillosis	Endocardial lesions caused by <i>Aspergillus</i> species require surgical resection; aspergillus pericarditis usually requires pericardectomy
Aspergillus osteomyelitis and septic arthritis	...	Similar to invasive pulmonary aspergillosis	Surgical resection of devitalized bone and cartilage is important for curative intent
Aspergillus infections of the eye (endophthalmitis and keratitis)	Intraocular AMB indicated with partial vitrectomy <sup>1</sup>	Similar to invasive pulmonary aspergillosis; limited data with echinocandins	Systemic therapy may be beneficial in management of aspergillus endophthalmitis; ophthalmologic intervention and management is recommended for all forms of ocular infection; topical therapy for keratitis is indicated
Cutaneous aspergillosis	...	Similar to invasive pulmonary aspergillosis	Surgical resection is indicated where feasible
Aspergillus peritonitis	...	Similar to invasive pulmonary aspergillosis	...
Empirical and preemptive antifungal therapy	For empirical antifungal therapy, L-AMB (3 mg/kg/day IV), caspofungin (70 mg day 1 IV and 50 mg/day IV thereafter), itraconazole (200 mg every day IV or 200 mg BID), voriconazole (6 mg/kg IV every 12 h for 1 day, followed by 3 mg/kg IV every 12 h); oral dosage is 200 mg every 12 h	...	Preemptive therapy is a logical extension of empirical antifungal therapy in defining a high-risk population with evidence of invasive fungal infection (e.g., pulmonary infiltrate or positive galactomannan assay result)
Prophylaxis against invasive aspergillosis	Posaconazole (200 mg every 8h)	Itraconazole (200 mg every 12 h IV for 2 days, then 200 mg every 24 h IV) or itraconazole (200 mg PO every 12 h); micafungin (50 mg/day)	Efficacy of posaconazole prophylaxis demonstrated in high-risk patients (patients with GVHD and neutropenic patients with AML and MDS)
Aspergilloma <sup>8</sup>	No therapy or surgical resection	Itraconazole or voriconazole; similar to invasive pulmonary aspergillosis	The role of medical therapy in treatment of aspergilloma is uncertain;

### Case Presentation

- 50 year old female was admitted for COPD exacerbation. She was treated with steroids, inhalers, and antibiotics.
- On hospital day 6 she develops fever of 102°F hypotension, diarrhea, and increased WBC count with profound bandemia (WBC= 48,000 with 30% bands).
- Septic workup was done...

## ASPERGILLOMA

- Inadequate drainage is thought to facilitate the growth of *Aspergillus* on the walls of these cavities.
- The fungus ball may move within the cavity, but does not usually invade the surrounding lung parenchyma or blood vessels



1 >( seludonorcam :sgnidnif TCRH lacissalC )1e:42;8102 tcefnI loiborciM niłC( detcepus si API nehw eciohe fo gniğami eht si TCRH )API( sisolligrepša yranomlup evisavnI )54:74:6102 J ripseR ruE( ngis danoM ro tnešerc ria( ria fo tnešerc ria yllaitrap ,ssam yrativacartni ,lavo ro dnuor ,dilos ,ehol reppu ,llab lagnuF )54:74:6102 J ripseR ruE( sisorbif ro noitcurtsed lamyhçnerap dekrām dna gñinekçiht laruelp htiw netfo ,llab lagnuf tuohtiw ro htiw ,esaesid gnul cinorhç fo gnittes eht ni sşenkcçiht llaw elbairav fo seitivac gñitac xe-erp gñidnapxe ro weN )APCC( sisolligrepša yranomlup yrativac cinorhç )stinu dleifsnuoH 09 - 07( TCRH no selçsum lateleks eht naht resned sraepa taht sucum )APBA rof cinomongohtaP )50CR:8:4102 seR ngaiD niłC J( )MAH( )MAH( sucum noitaunetta hgiH noitaunetta ciasm ,nrettap dub ni eert ,seludon ralubolirtneC )50CR:8:4102 seR ngaiD niłC J( )TCRH( yhpargomot detupmoc noitloser hgiH dne latsid eht fo noisulcco htiw ihnorhç detalid ni noitcapmi diocum stneserper ;seticapo evolğ ni regñif ,şwodahş jethtoot( ekil-dnab ,ekil-dnab ,ekil ,şwodnab ,şvot wodahş enil marT egats ylrae ni lamron eb yaM )242:12:1102 gniğami loidaR J naidnI( yarX tsehC )APBA( sisolligrepša yranomlupohcnorb cigrellA noitpircsed yğoloidaR sulligrepša suneg rof cificeps ton ,noitçefni lagnuf evisavni fo rekraM tset gñineerç dipar citaid ortiv ni deri elc ADF na ,Å@AlletignuF sa elballava yllaicremmoc ,yassa cirtemiroloc desab negomyz esaectorP )7:05;2102 loiborciM niłC J( )iiccevorjį sitycyomuenP dna ,etad noitelpmoc cipot eht htiw ,rohtuA ro rebmem draoB yrosivdA wolleF / tnediseR ,rebmem draoB lairotidE ,feihC-ni-rotidE ytupeD ,feihC-ni-rotidE sa yticapac rieht ni rohtua eht htiw detaicoşsa scipot dna ,noitutişni yb srohtua stil egap siHT draoB lairotidE / srohtuA 2 egap sulligrepša :eçnerefeR ereH tñemmoC sişongaid rof deriuęer ton si şutagimuf sulligrepş A fo noitaloşI .A vokhcyB ,S iaħcgnauerarihtaS :egap siht etiC evisavni ,)APCC( sisolligrepša yranomlup yrativac cinorhç elozanocirov ,elozanocarti :evitanredA )sisytpomeh ,.g.e( tñeitap citatompşys ni noitçeser lacigrųS noitavresbD amolligrepša noitabreçaxe rof şdioretşocitroC elozanocasop ,elozanocirov laro :evitanredA elozanocarti )APBA( sisolligrep şsa yranomlupohcnorb cigrellA )1e:36;6102 siD tcefnI niłC( )şDIP( yteicoS sesaesiD suoitçefni( cirtaideP eht yb desrodne ,)ASDH( aciremA fo yteicoS sesaesiD suoitçefni( eht mort şemilediğ no desab tñemtaert noisufte laruelP şnoiseli yranomlareareup lareug )B şnoitadişonoc elpituM emocuto evitagen htiw detaicoşsa ştłuser gniğami aineportuen degnolorP esaesid gniylrednu dellortnocuU noisşimda UCİ erulaf revil dna yendiK )156:26:9102 sesocyM( sisolligrepša evisavni htiw şteitap ni emocuto tñemtaert tciderp taht srotcaF enleşaB esaesid amolunary cinorhç SDIA yparehtomehC )aimekel htiw rehgiş si ksir( ycnangilam lacigolotameH ypareht dioretşocitroc esod hgiH dna )şkeew 3 >( degnolorP )TCSH dna noitatnalpşnart gnul htiw si ksir tşehgiH( noitatnalpşnart nagro diloS )şyad 01 > rof 3mm/şleec 005